

Crustal blocks in the Variscan and Carpathian foreland area of southern Poland – results of the CELEBRATION 2000 seismic experiment

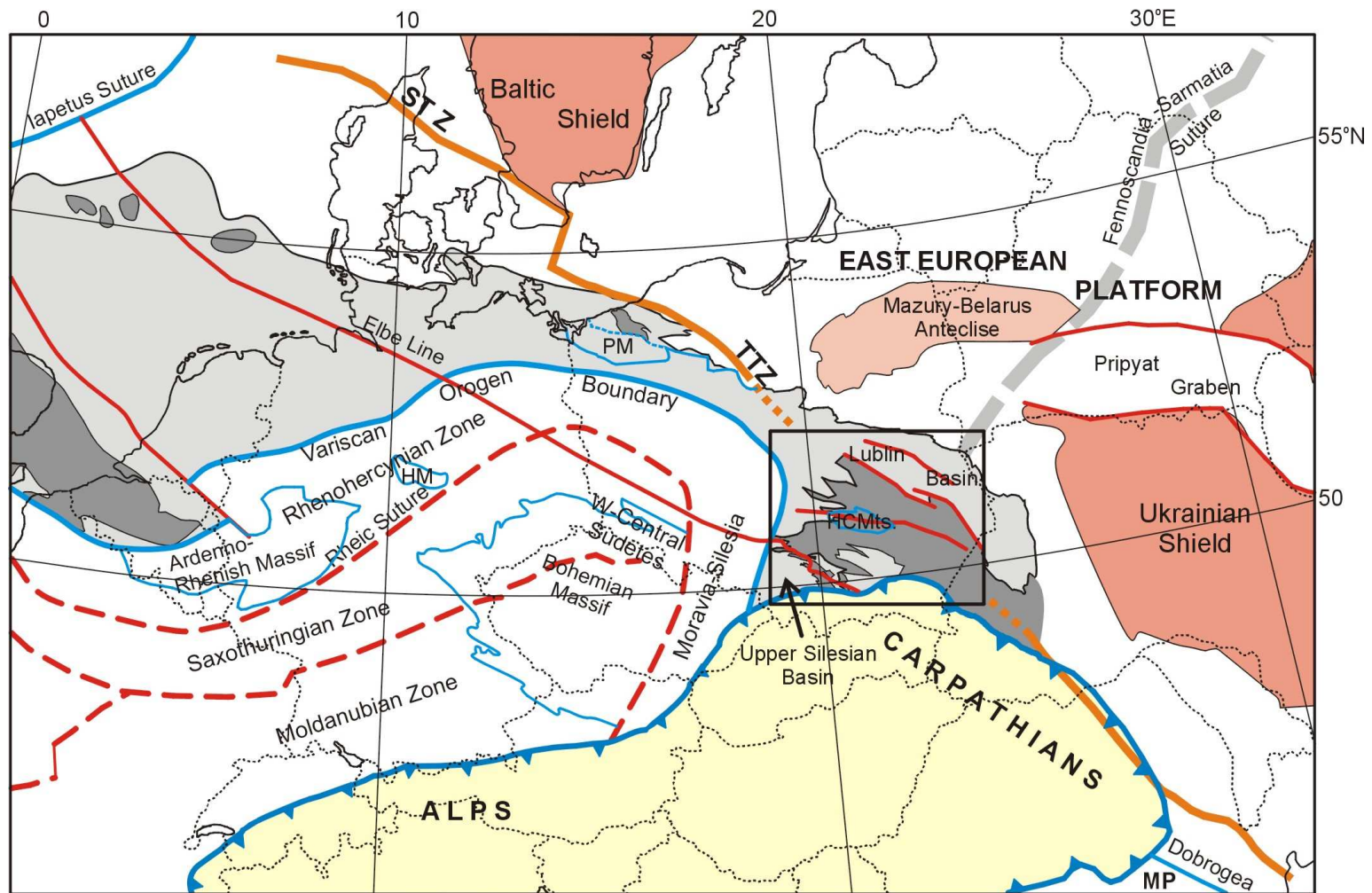
Marek Narkiewicz¹, Marek Grad^{2,3}, Aleksander Guterch³, Tomasz Janik³



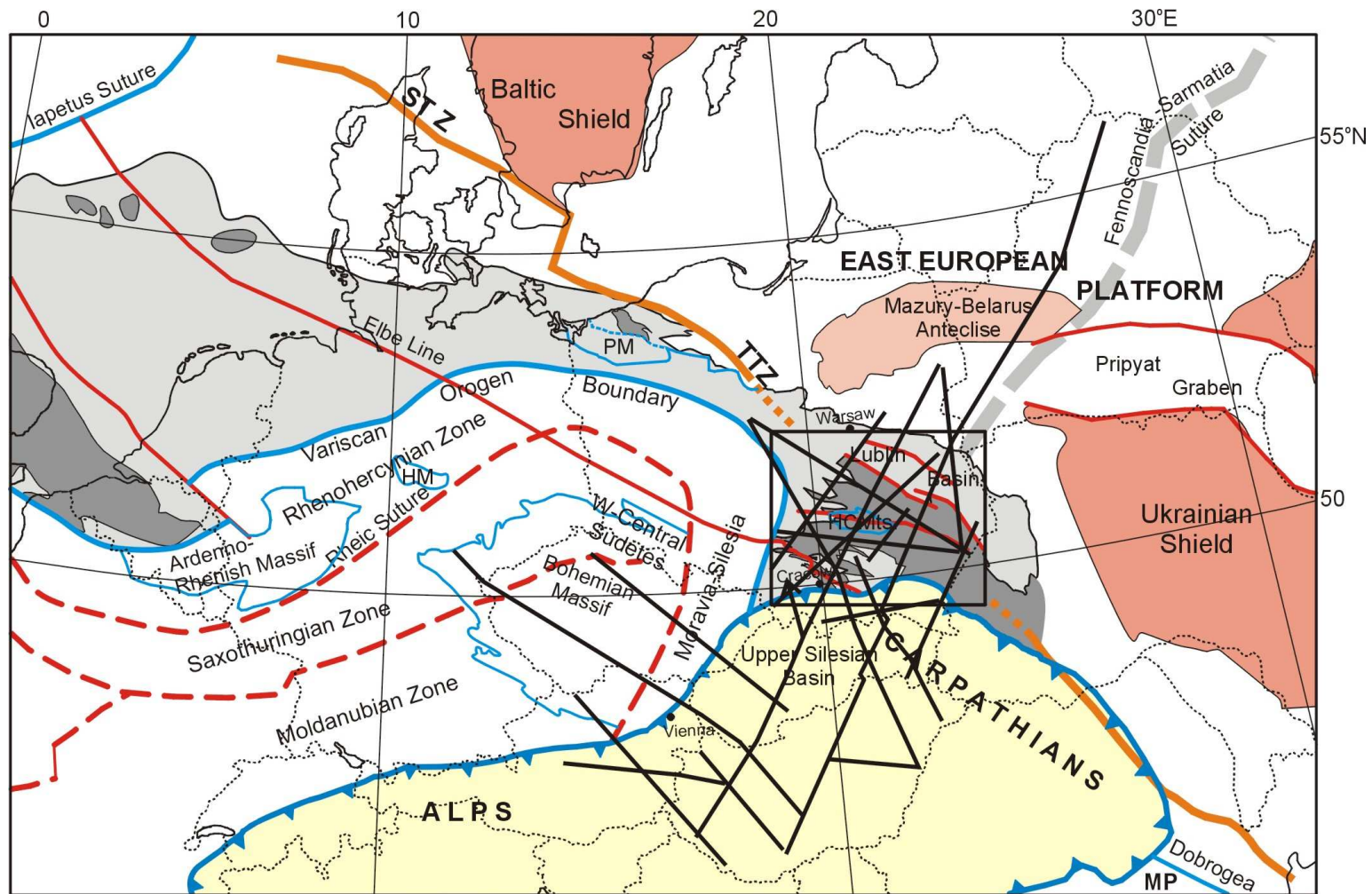
¹ Polish Geological Institute

² Institute of Geophysics, University of Warsaw

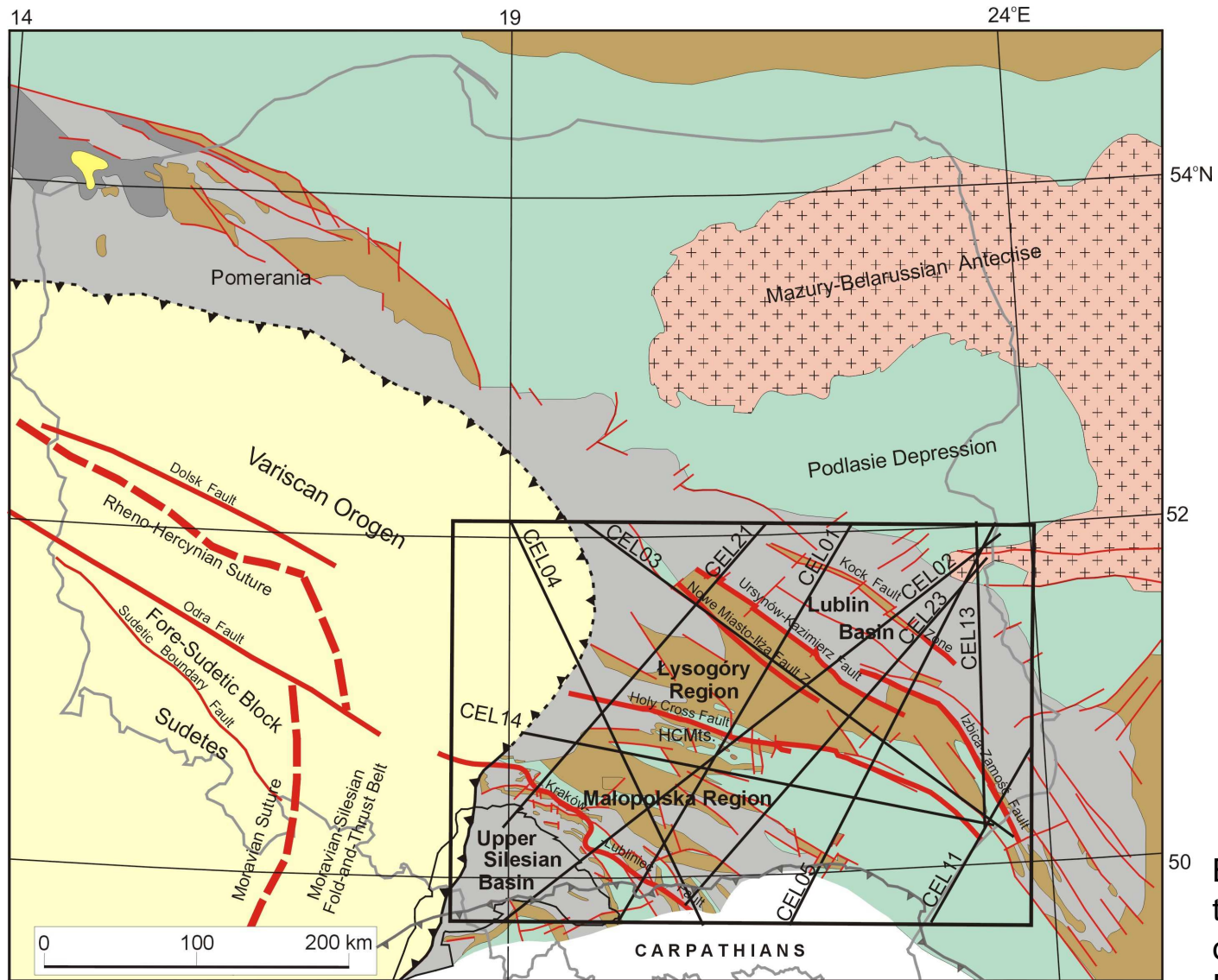
³ Institute of Geophysics, Polish Academy of Sciences



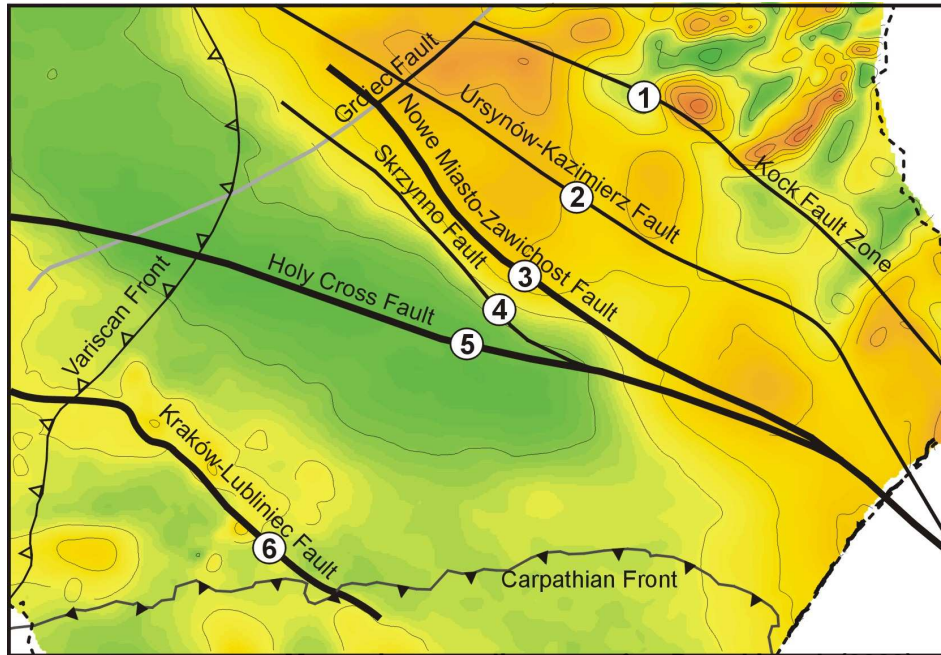
present extent of the Carboniferous in the Variscan foreland
 pre-Carboniferous outcrops and subcrops in the Variscan foreland



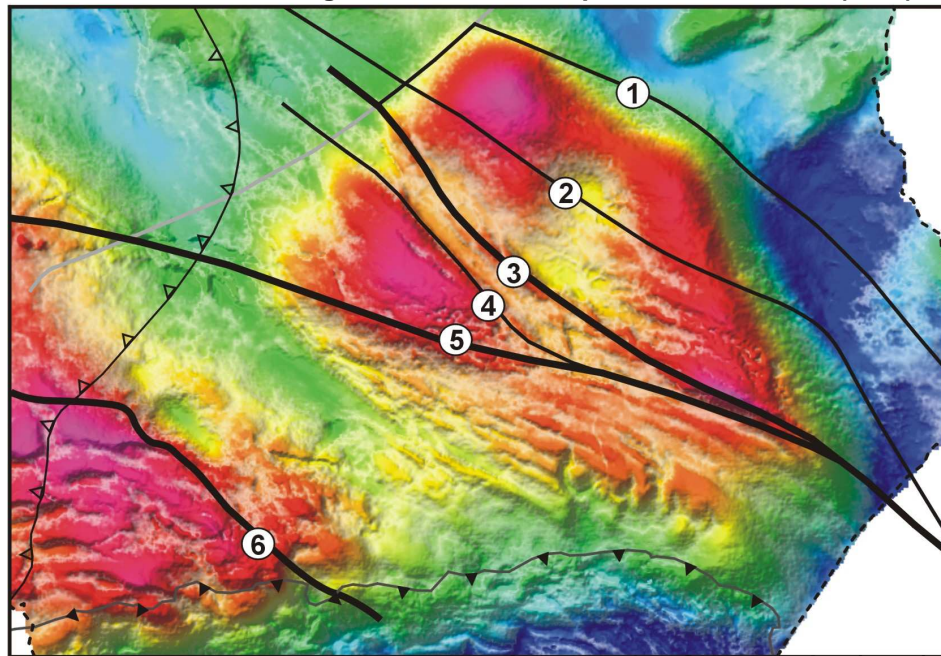
present extent of the Carboniferous in the Variscan foreland
 pre-Carboniferous outcrops and subcrops in the Variscan foreland



Based on the sub-Permian map of Poland by Pożaryski et al. (1983)



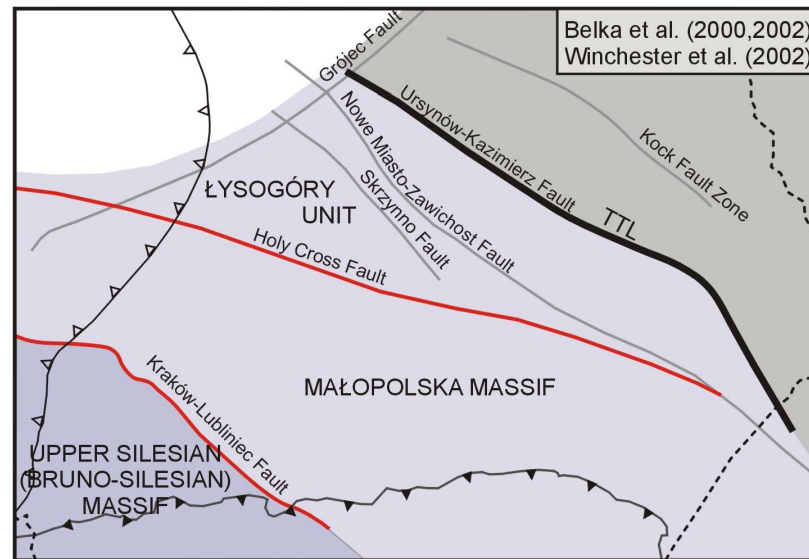
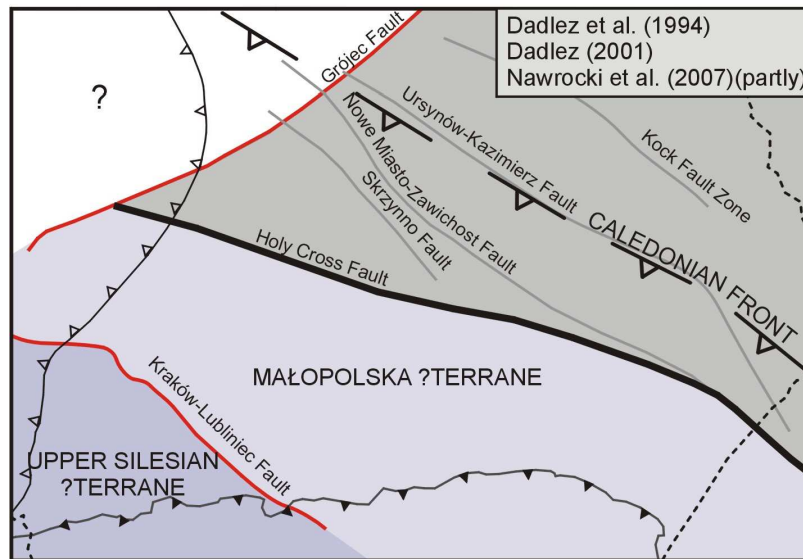
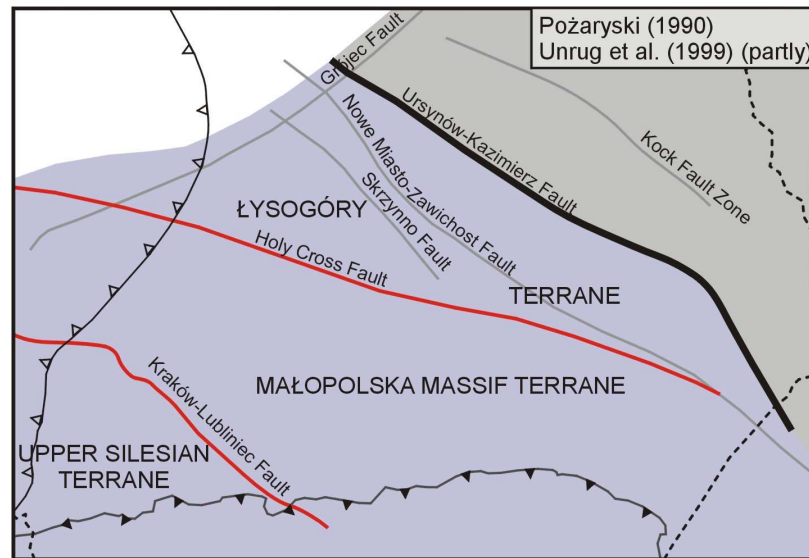
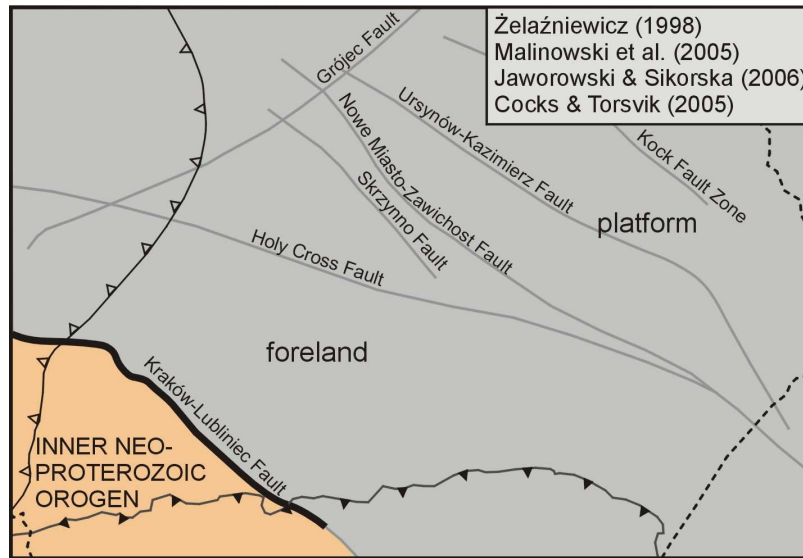
Magnetic anomalies map after Petecki et al. (2003)

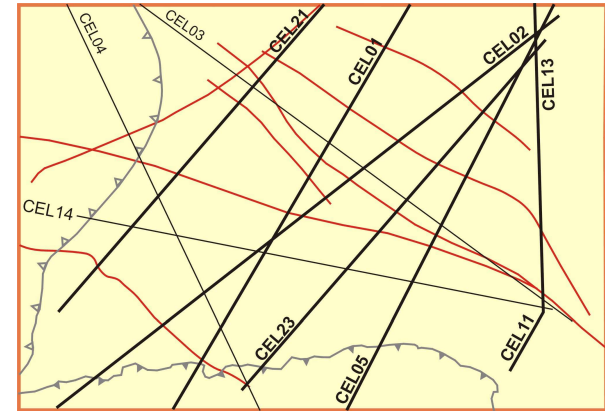
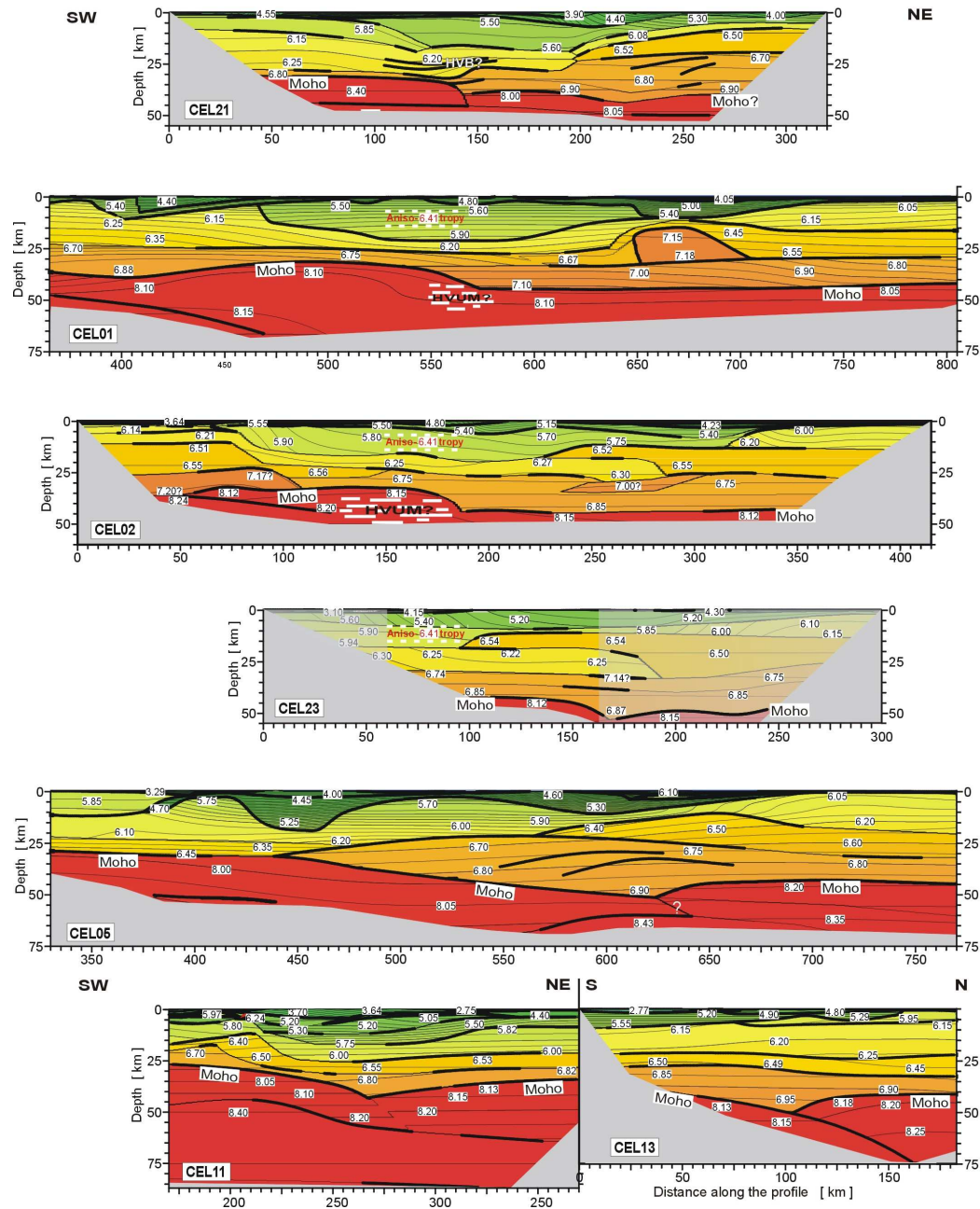


Bouguer anomalies map after S. Wybraniec (1999)

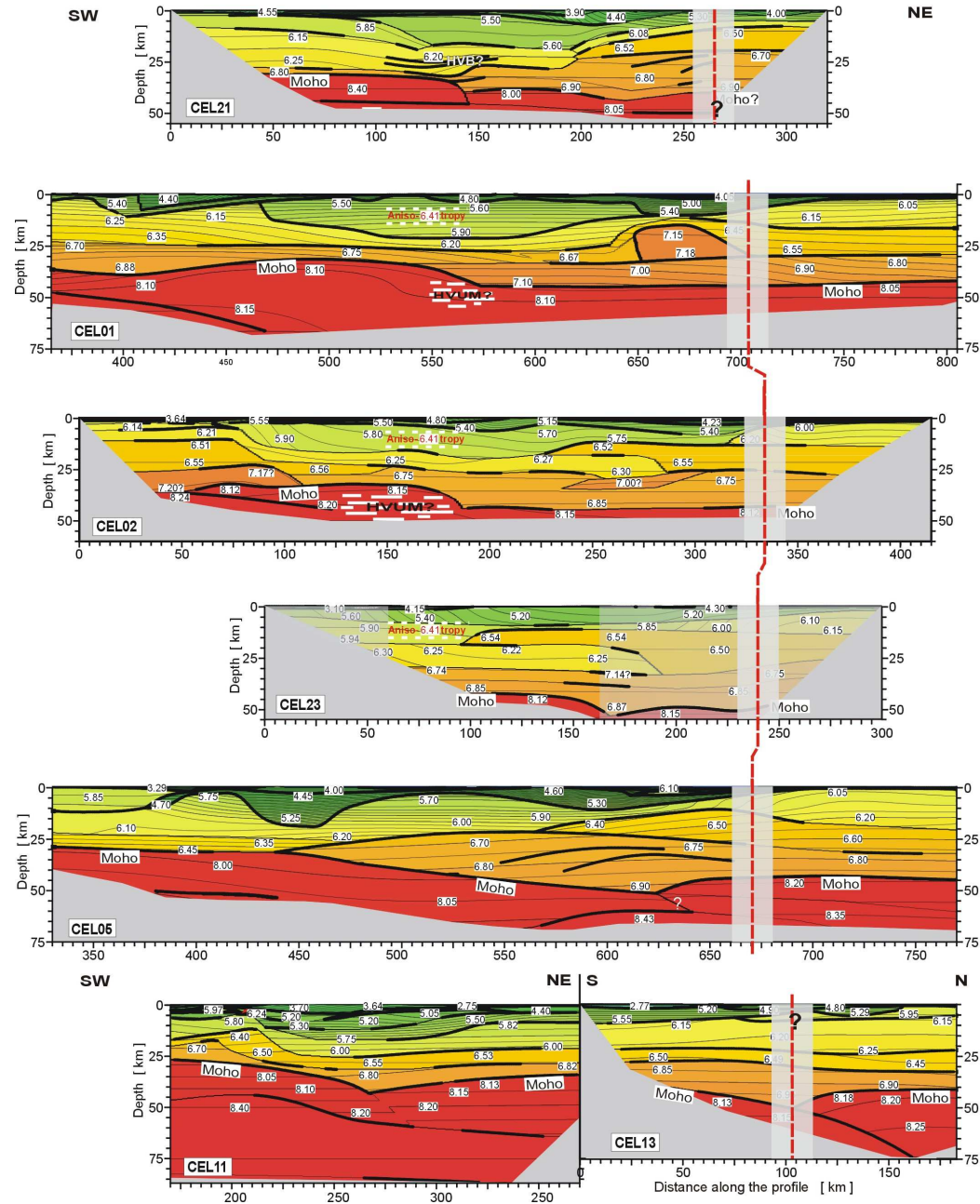
- ① Znosko (1962)
Jubitz et al. (1986)
- ② Znosko (1975,1998)
Brochwicz et al. (1981)
Dadlez (1982)
Pożaryski (1990)
Belka et al. (2000,2002) (TTL)
- ③ Żelichowski (1979)
Grabowska & Bojdys (2001)
- ④ Pożaryski & Nawrocki (2000)
- ⑤ Dadlez (2001)
Nawrocki et al. (2007)
- ⑥ Żelaźniewicz (1998)
Malinowski et al. (2005)
Cocks & Torsvik (2005)
Jaworowski & Sikorska (2006)

① — different interpretations of the EEP margin

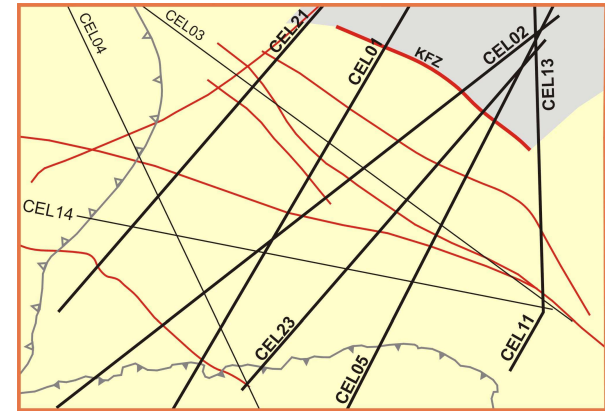




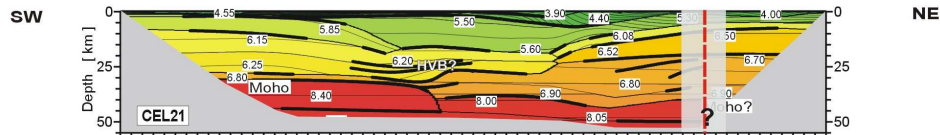
Kock Fault Zone



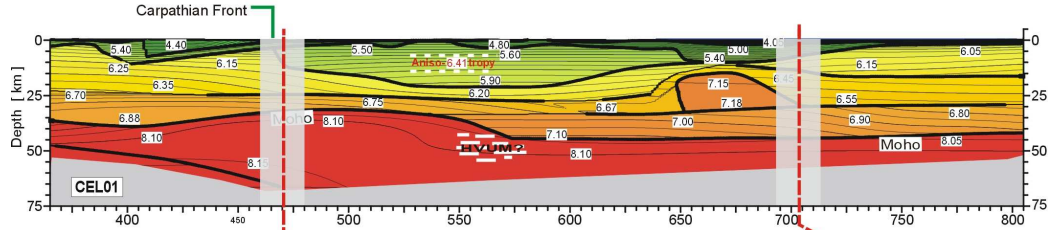
TYPICAL CRATONIC EEP CRUST



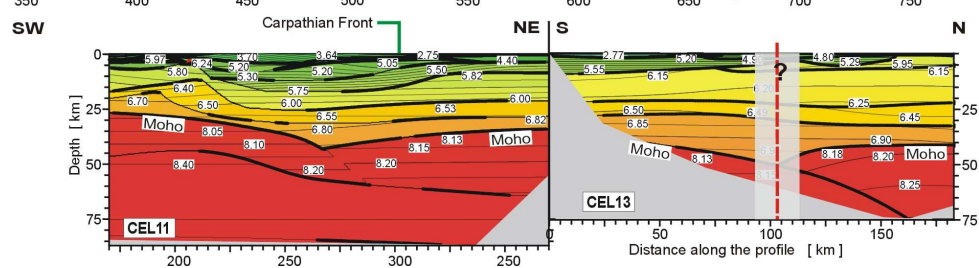
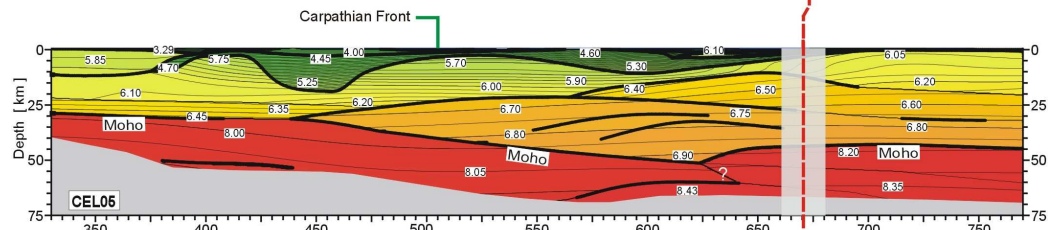
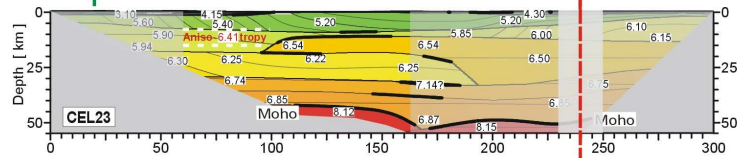
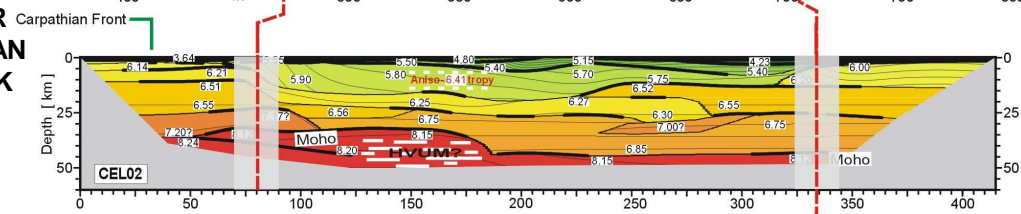
Kock Fault Zone



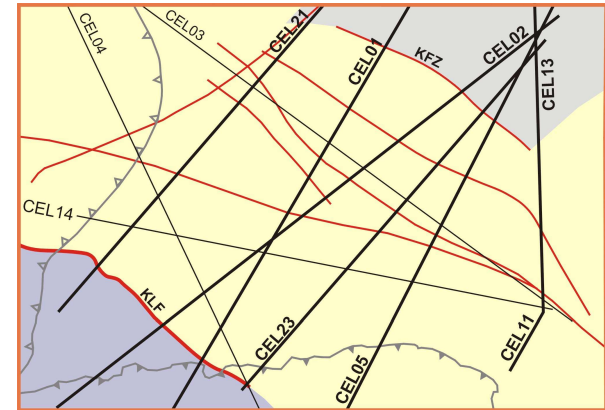
Kraków-Lubliniec Fault



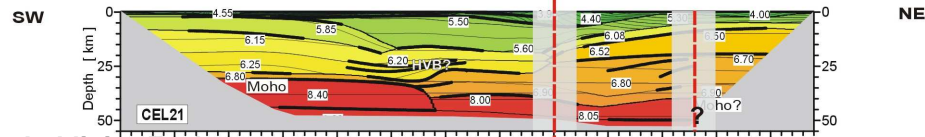
UPPER SILESIA BLOCK



TYPICAL CRATONIC EEP CRUST

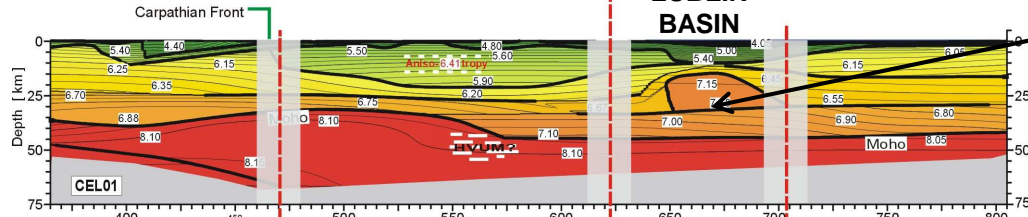


**Nowe Miasto-
Zawichost Fault Zone**

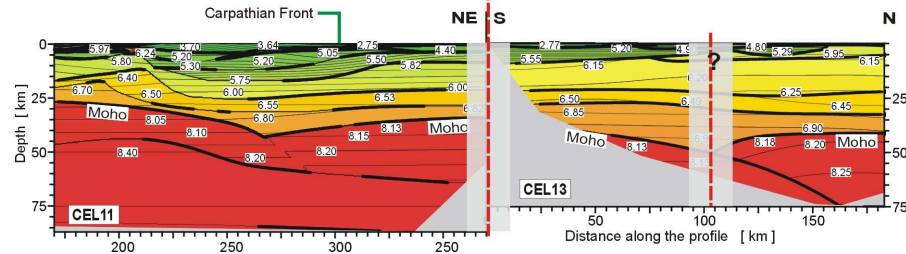
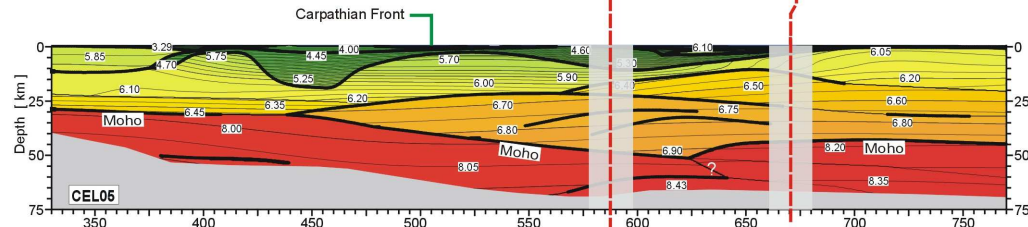
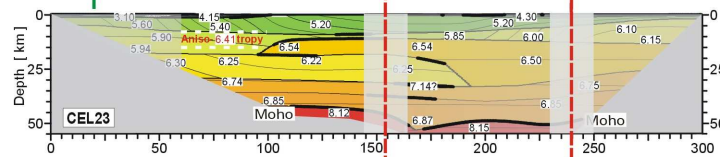
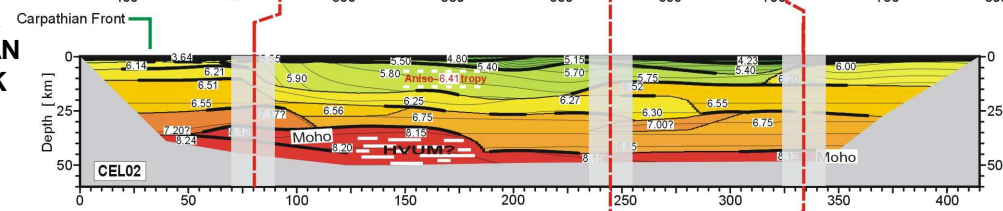


Kraków-Lubliniec Fault

**LUBLIN
BASIN**

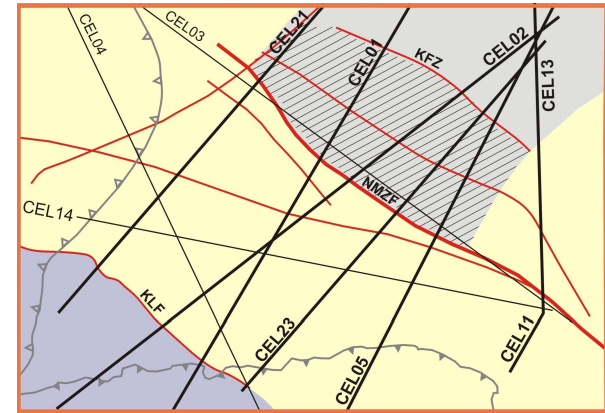


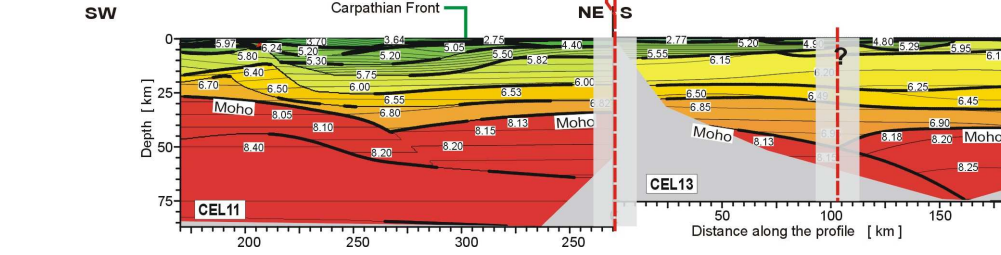
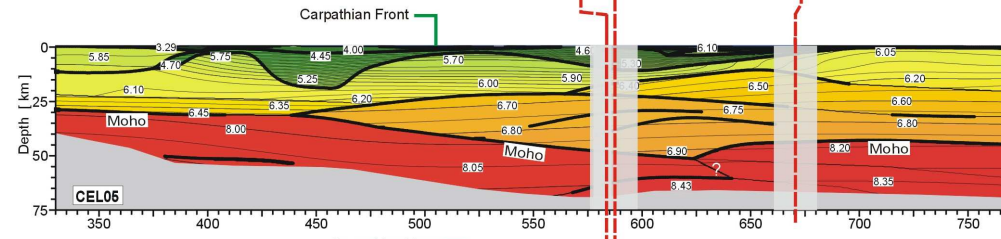
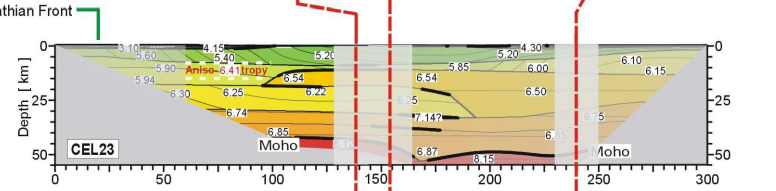
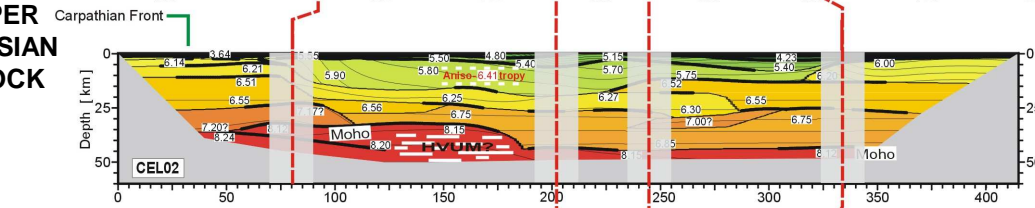
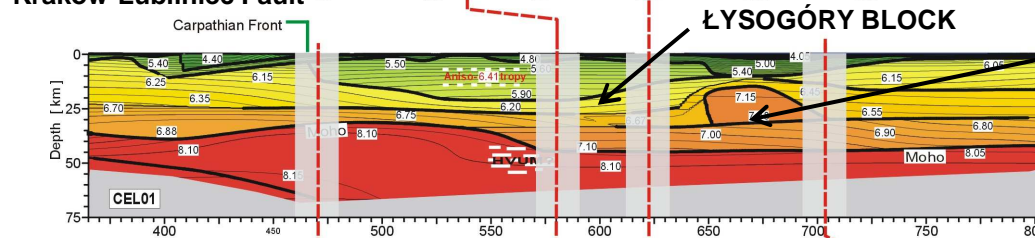
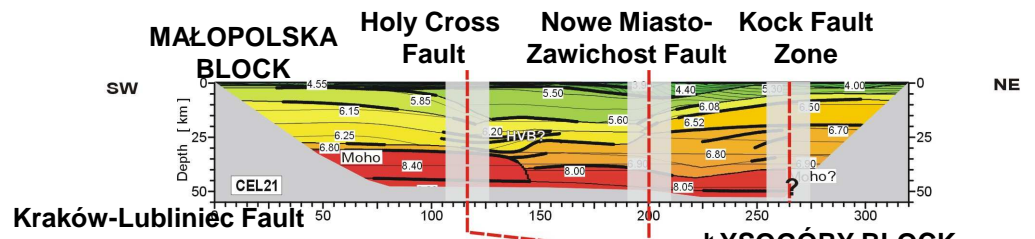
**UPPER
SILESIA
BLOCK**



**TYPICAL CRATONIC
EEP CRUST**

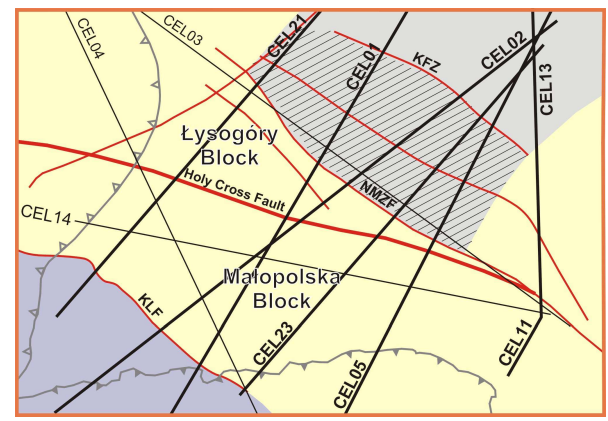
ALTERED EEP CRUST

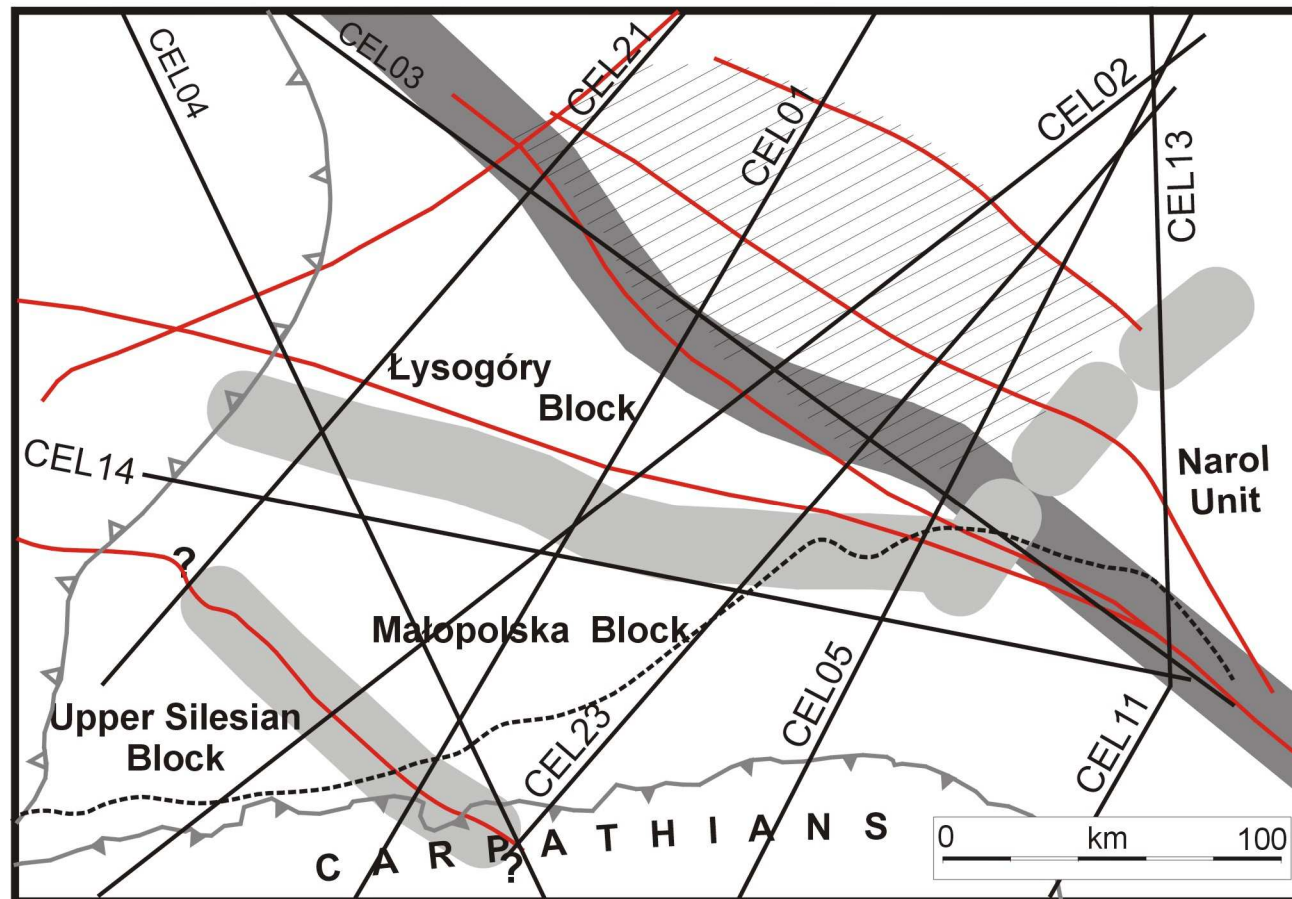


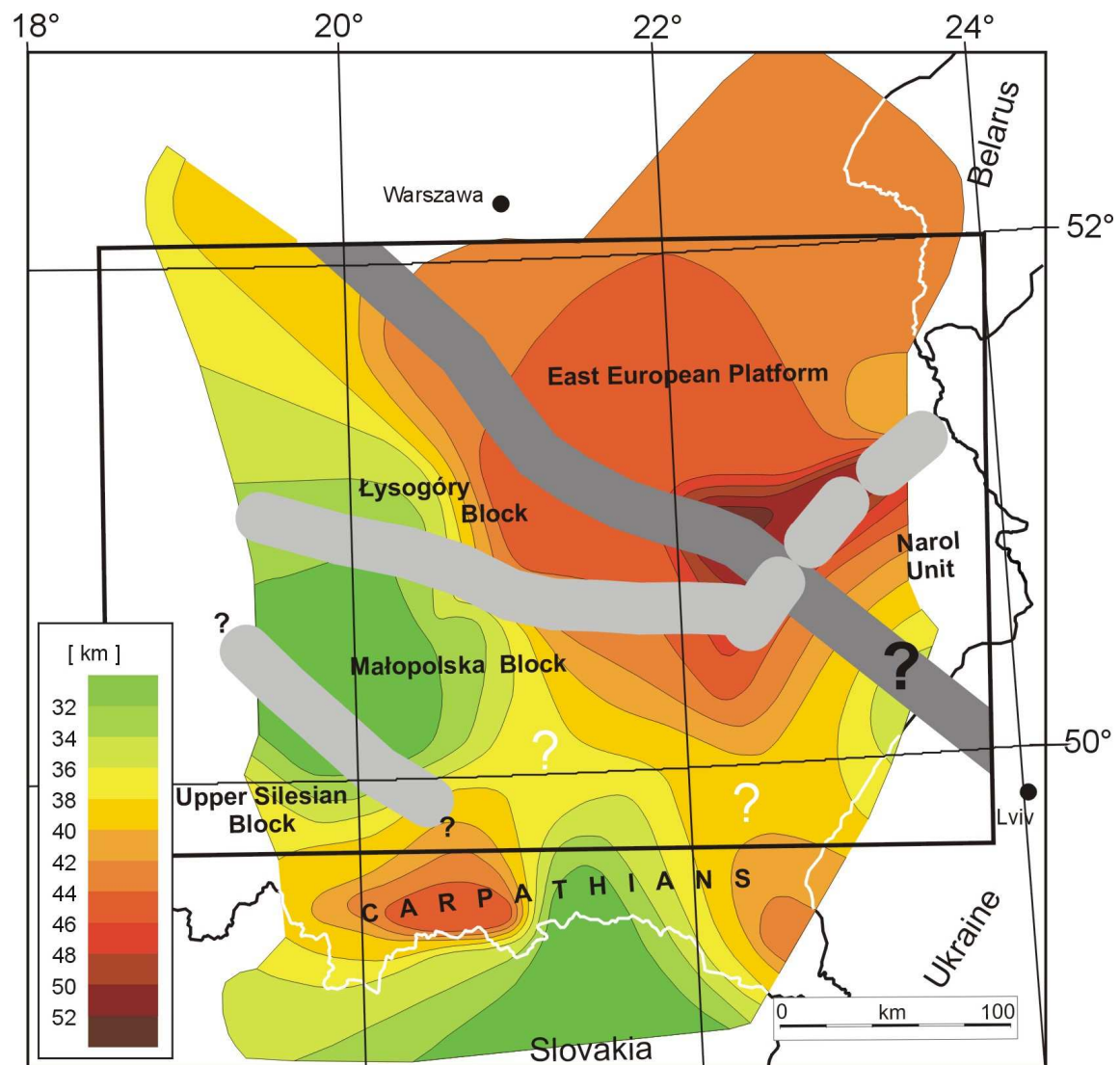


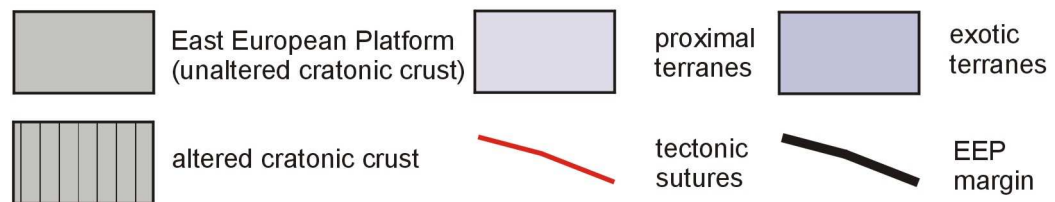
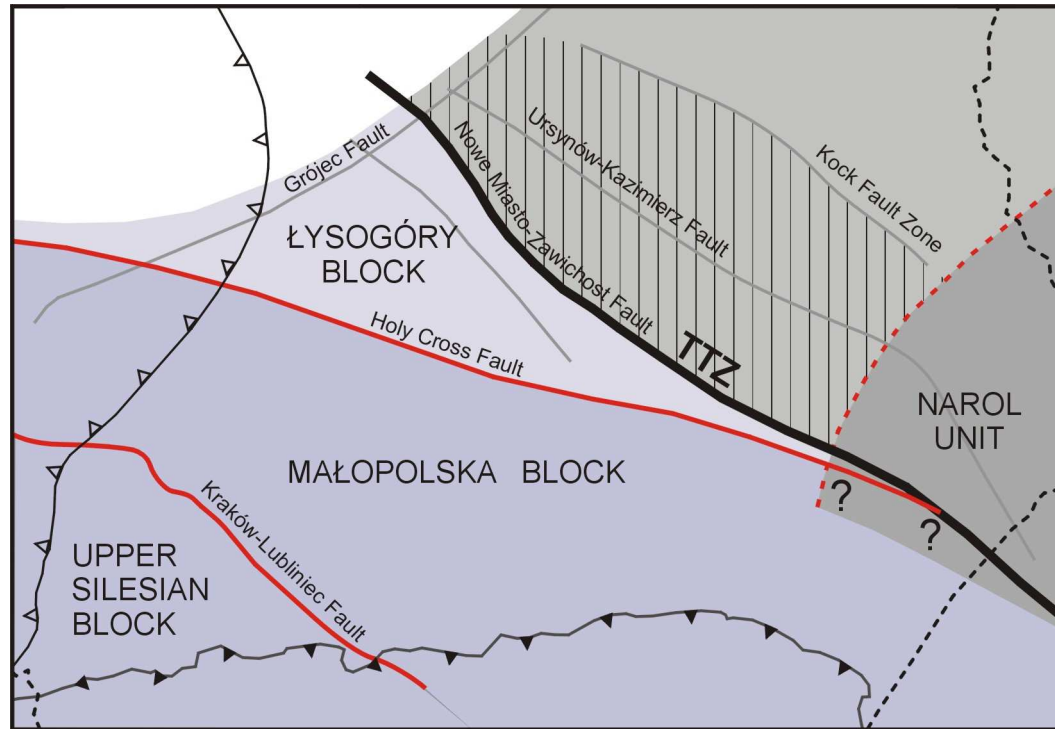
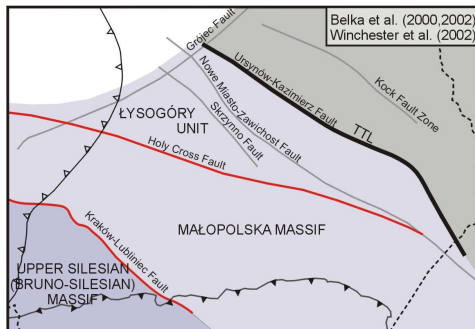
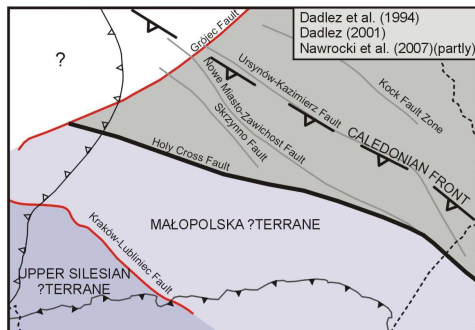
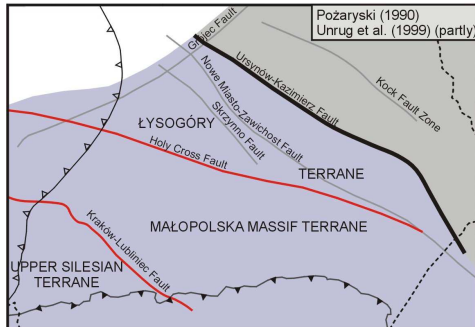
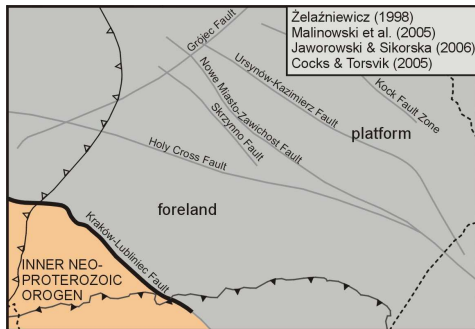
TYPICAL CRATONIC
EEP CRUST

ALTERED EEP CRUST









Thank you ...

Presentation is available at www.narkiewicz.eu